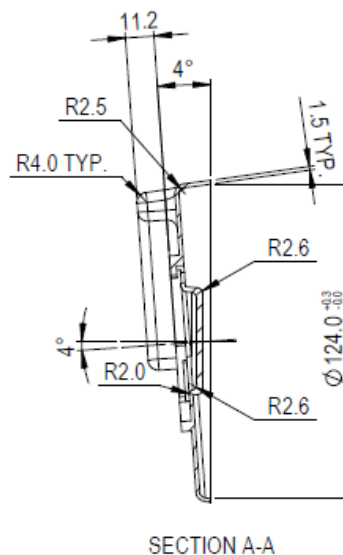
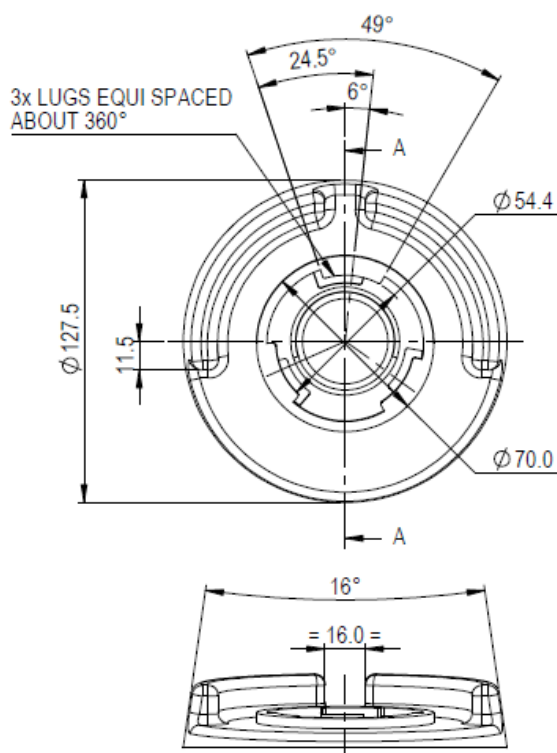


6448-0034 - Bellows Footswitch

- Low profile, easy to operate foot bellows
- Black bellow fitted to grey base plate
- Bellows material - flexible polymer
- Bellow base plate material - rigid polymer
- Neoprene pad applied to base
- Low profile to reduce operator fatigue
- Supplied with 2 metres of tubing
- Operating Temperature: -10°C to +40°C



Images & Reference Dimensions



Specifications

Standards/approvals	N/A
Degree of protection	EN 60529 IP67
Connection method	Tubing 3mm I/D 6mm O/D
Operating temperature	-10°C to +40°C
Body material	Thermoplastic
Weight	0.3kg